



# FARMHOUSE FACELIFT

## SHAWN & KIRK - SHOPPING GUIDE



1. CUSTOM KITCHEN CABINETS: [de Boer Cabinets](#)

2. COUNTERTOP & BACKSPLASH: Ciot | [Sapienstone in Arabescato Levigato](#)

3. FAUCET, SINK, SOAP DISPENSER & POT FILLER: Vogt Industries| [Drava Kitchen Faucet in Matte Black](#) | [Soap Dispenser in Matte Black](#) | [Wolfsberg Sink](#) | [Drava Pot Filler in Matte Black](#)

4. RUG: Jaipur Living | [Canteena Runner](#)

5. ENGINEERED HARDWOOD: Fuzion Flooring | [Castello in Lombardy](#).

6. UPHOLSTERY FABRIC: Tonic Living | [Lundie Plaid Fabric in Cayenne](#) | [Lundie Plaid Fabric in Camel](#)

7. CABINET HARDWARE: Battle Creek Hardware | [Portland Cup Pull](#) | [Portland Round Top Knob](#) | [Portland Classic Pull Bar in Florentine Brass](#) | [Midwest Cup Pull in Florentine Brass](#)

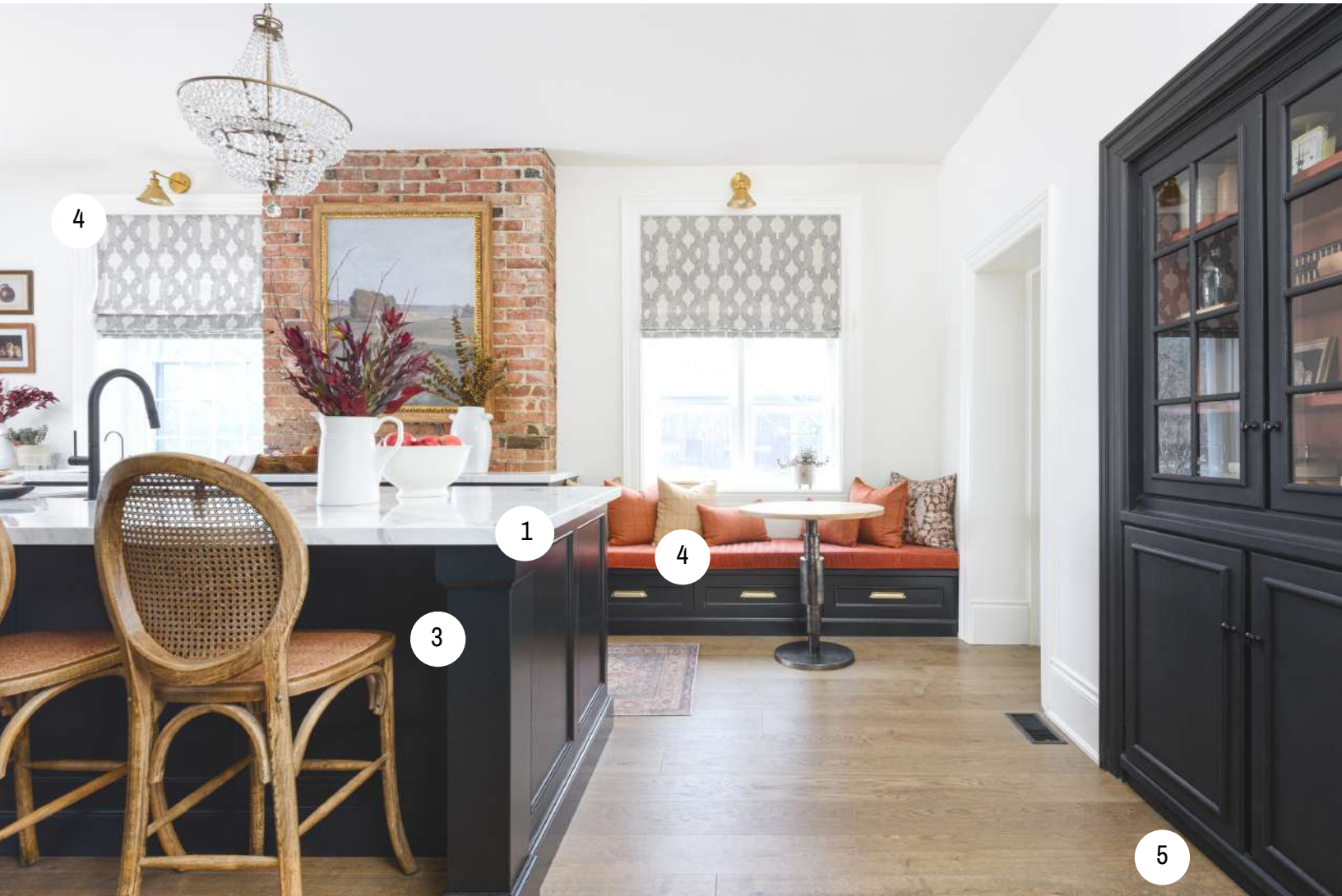






# FARMHOUSE FACELIFT

## SHAWN & KIRK- SHOPPING GUIDE



1. COUNTERTOP: Ciot | [Sapienstone in Arabescato Levigato](#)
2. FAUCET & SINK : Vogt Industries| [Vienna Undermount Bar Sink](#) | [Griffen Kitchen Faucet for Water Filtration in Matte Black](#)
3. CUSTOM KITCHEN CABINETS: [de Boer Cabinets](#)
4. DRAPERY & UPHOLSTERY FABRIC: Tonic Living | [Florence Linen in Blackwork](#) | [Lundie Plaid Fabric in Cayenne](#) | [Lundie Plaid Fabric in Camel](#)
5. ENGINEERED HARDWOOD: Fuzion Flooring | [Castello in Lombardy](#)
6. VINTAGE LIGHTING: [Around the Block](#)





# FARMHOUSE FACELIFT

## SHAWN & KIRK - SHOPPING GUIDE



1. COUNTERTOP & BACKSPLASH: Ciot | [Sapienstone in Arabescato Levigato](#)

2. POT FILLER: Vogt Industries | [Drava Pot Filler in Matte Black](#)

3. CUSTOM KITCHEN CABINETS: [de Boer Cabinets](#)

4. CABINET HARDWARE: Battle Creek Hardware | [Portland Cup Pull](#) | [Portland Round Top Knob](#) | [Portland Classic Pull Bar in Florentine Brass](#)

5. ENGINEERED HARDWOOD: Fuzion Flooring | [Castello in Lombardy](#)





# FARMHOUSE FACELIFT

## SHAWN & KIRK- SHOPPING GUIDE



1. COUNTERTOP & BACKSPLASH: [Ciot | Sapienstone in Arabescato Levigato](#)
2. CUSTOM KITCHEN CABINETS: [de Boer Cabinets](#)
3. DRAPERY & UPHOLSTERY FABRIC: [Tonic Living | Florence Linen in Blackwork | Lundie Plaid Fabric in Cayenne | Lundie Plaid Fabric in Camel](#)
4. RUG: [Jaipur Living | Canteena Runner](#)
5. ENGINEERED HARDWOOD: [Fuzion Flooring | Castello in Lombardy](#)
6. ARTWORK: [NorthPrints](#)

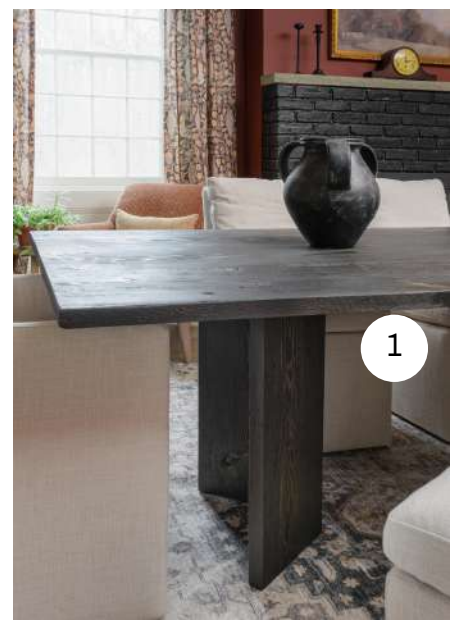






# FARMHOUSE FACELIFT

SHAWN & KIRK - SHOPPING GUIDE



- 1. CUSTOM DINING TABLE: [Good Wood Brothers](#)
- 2. DRAPERY FABRIC: [Tonic Living | Kalida Fabric in Walnut](#)
- 3. VINTAGE LIGHT FIXTURE RE-WIRING : [Universal Lighting](#)





# FARMHOUSE FACELIFT

## SHAWN & KIRK- SHOPPING GUIDE



1. CUSTOM DINING TABLE: [Good Wood Brothers](#)

2. AREA RUG: Jaipur Living | [Terra Rug](#) in TRR17

3. ENGINEERED HARDWOOD: Fuzion Flooring | [Castello in Lombardy](#)







# FARMHOUSE FACELIFT

## SHAWN & KIRK - SHOPPING GUIDE



1. CUSTOM VANITY: [de Boer Cabinets](#)

2. SINK, FAUCET & TOWEL RING: [Vogt Industries | Rechteck Vogranite Vanity Sink in Black](#) | [Drava Wall Mount Lavatory Faucet in Black/Gold](#) | [Drava Towel Ring in Black/Gold](#)

3. TILE & COUNTERTOP: [Ciot | Nova Como RT](#) | [Sapienstone in Arabescato Levigato](#)

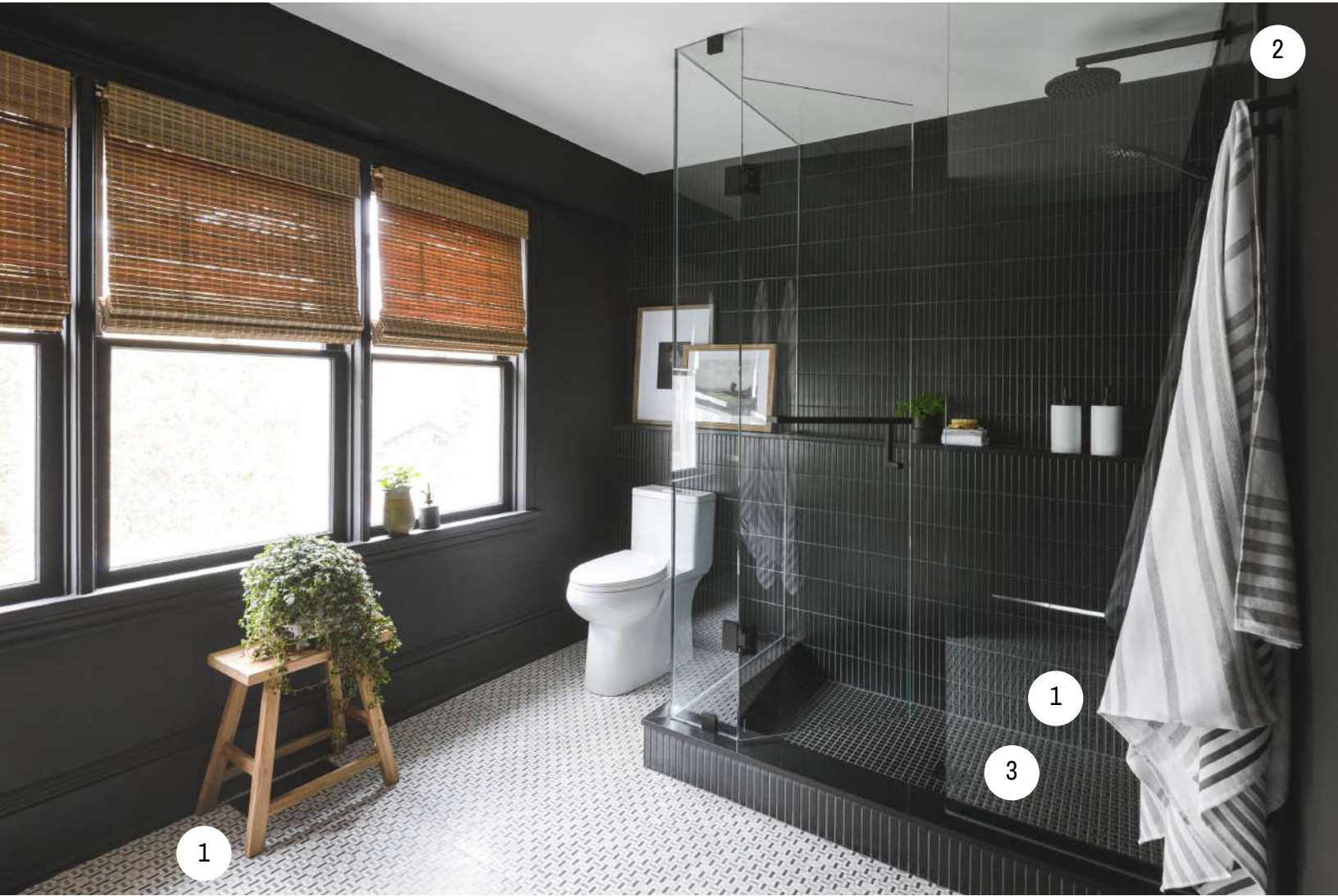
4. CABINET HARDWARE: [Battle Creek Hardware | Portland 3" Cup Pull in Matte Black](#)





# FARMHOUSE FACELIFT

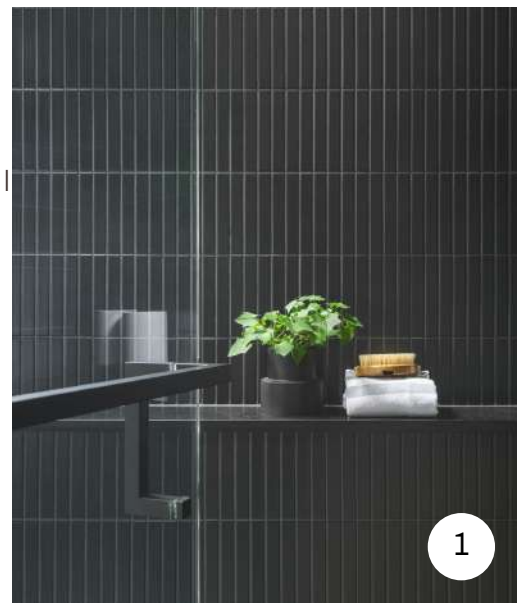
## SHAWN & KIRK - SHOPPING GUIDE



1. TILE: [Ciot](#) | [Nova Como RT](#) | [Matchstick Large Black Matt](#) | [Les Classiques in Black Satin](#)

2. ROBE HOOK, TOILET PAPER HOLDER & SHOWER FIXTURES: [Vogt Industries](#) | [Drava Robe Hook in Matte Black](#) | [Drava Toilet Paper Holder in Matte Black](#) | [Drava 2-Way Thermostatic Set in Black/Gold](#)

3. HEATED FLOOR, SHOWER DRAIN & WATERPROOFING: [Schluter Systems](#) | [Ditra Heat System](#) | [Kerdi Drain in Pure Matte Black](#) | [Waterproofing](#)

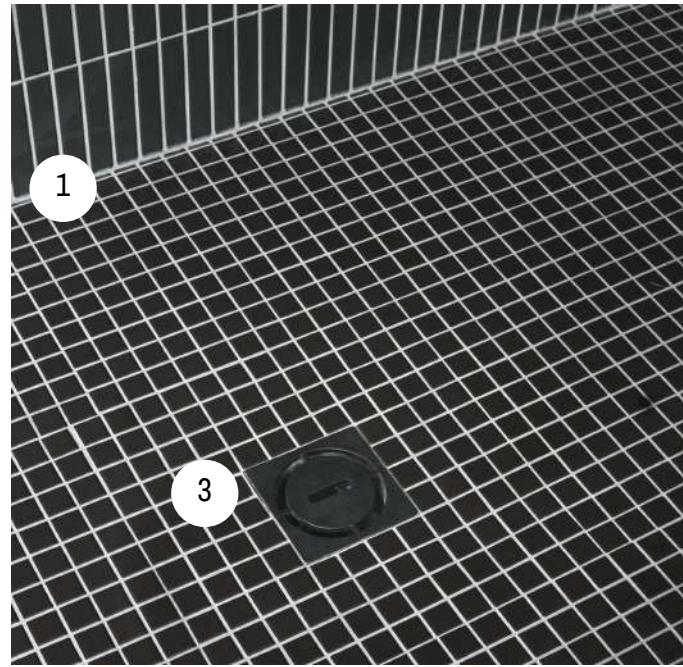






# FARMHOUSE FACELIFT

## SHAWN & KIRK - SHOPPING GUIDE



1. TILE: Ciot | [Nova Como RT](#) | [Matchstick Large Black Matt](#) | [Les Classiques in Black Satin](#)

2. ROBE HOOK & SHOWER FIXTURES: Vogt Industries | [Drava Robe Hook in Matte Black](#) | [Drava 2-Way Thermostatic Set in Black/Gold](#)

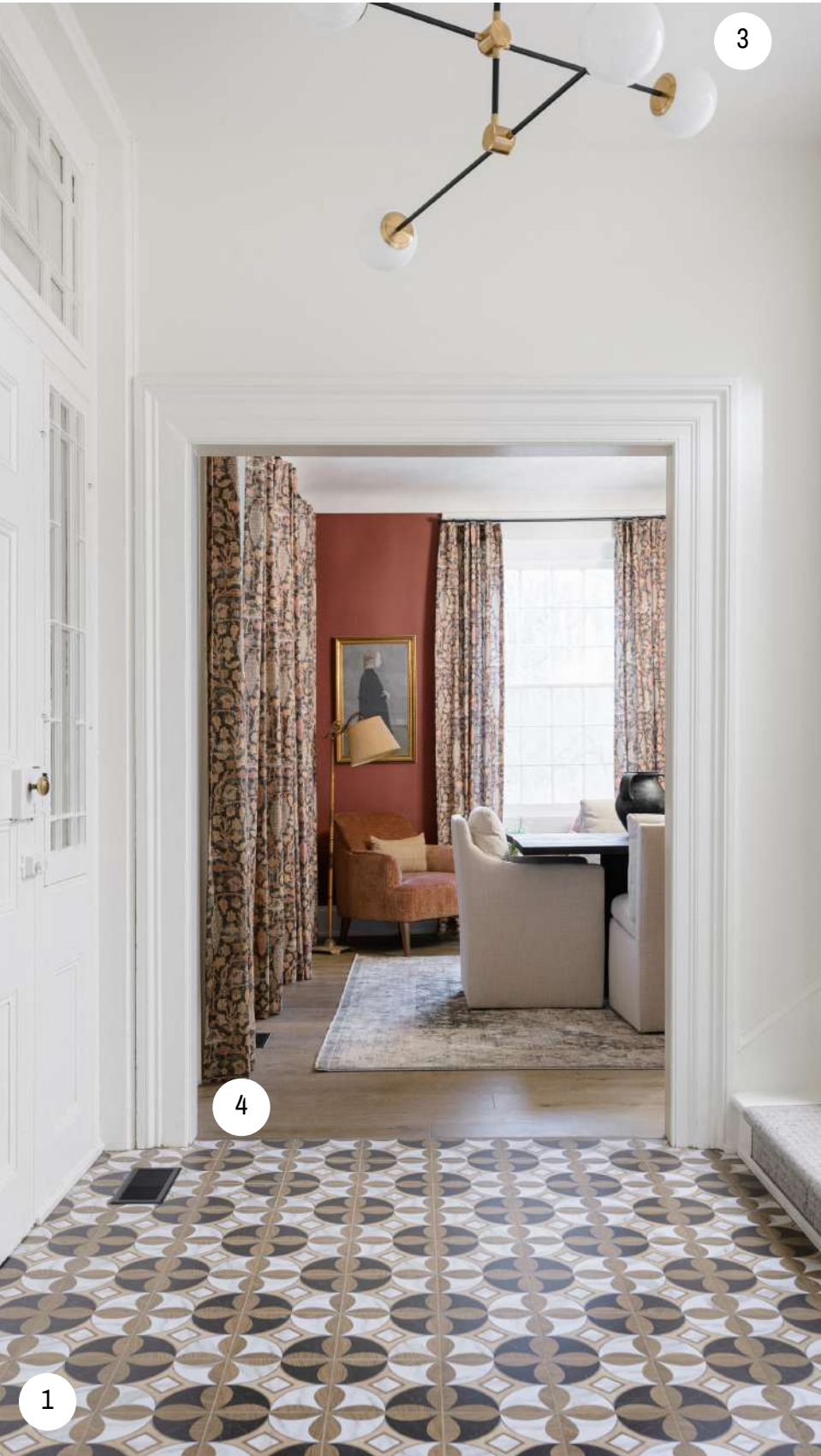
3. HEATED FLOOR, SHOWER DRAIN & WATERPROOFING: Schluter Systems | [Ditra Heat System](#) | [Kerdi Drain in Pure Matte Black](#) | [Waterproofing](#)





# FARMHOUSE FACELIFT

## SHAWN & KIRK- SHOPPING GUIDE



1. TILE: [Ciot | Intarsi Elite 01 RT](#)

2. ANTIQUE FRAMES & MIRRORS: [Around the Block](#)

3. LIGHT FIXTURE: [Universal Lighting](#)

4. ENGINEERED HARDWOOD: [Fuzion Flooring | Castello in Lombardy](#)







# FARMHOUSE FACELIFT

SHAWN & KIRK - SHOPPING GUIDE



1. TILE: Ciot | [Terra Esagono Antracite](#)

2. INSULATION: Rockwool | [Comfortbatt](#)

**ADDITIONAL  
SUPPLIERS INCLUDE:**

TEMPORARY FLOOR PROTECTION: [Ramboard](#)