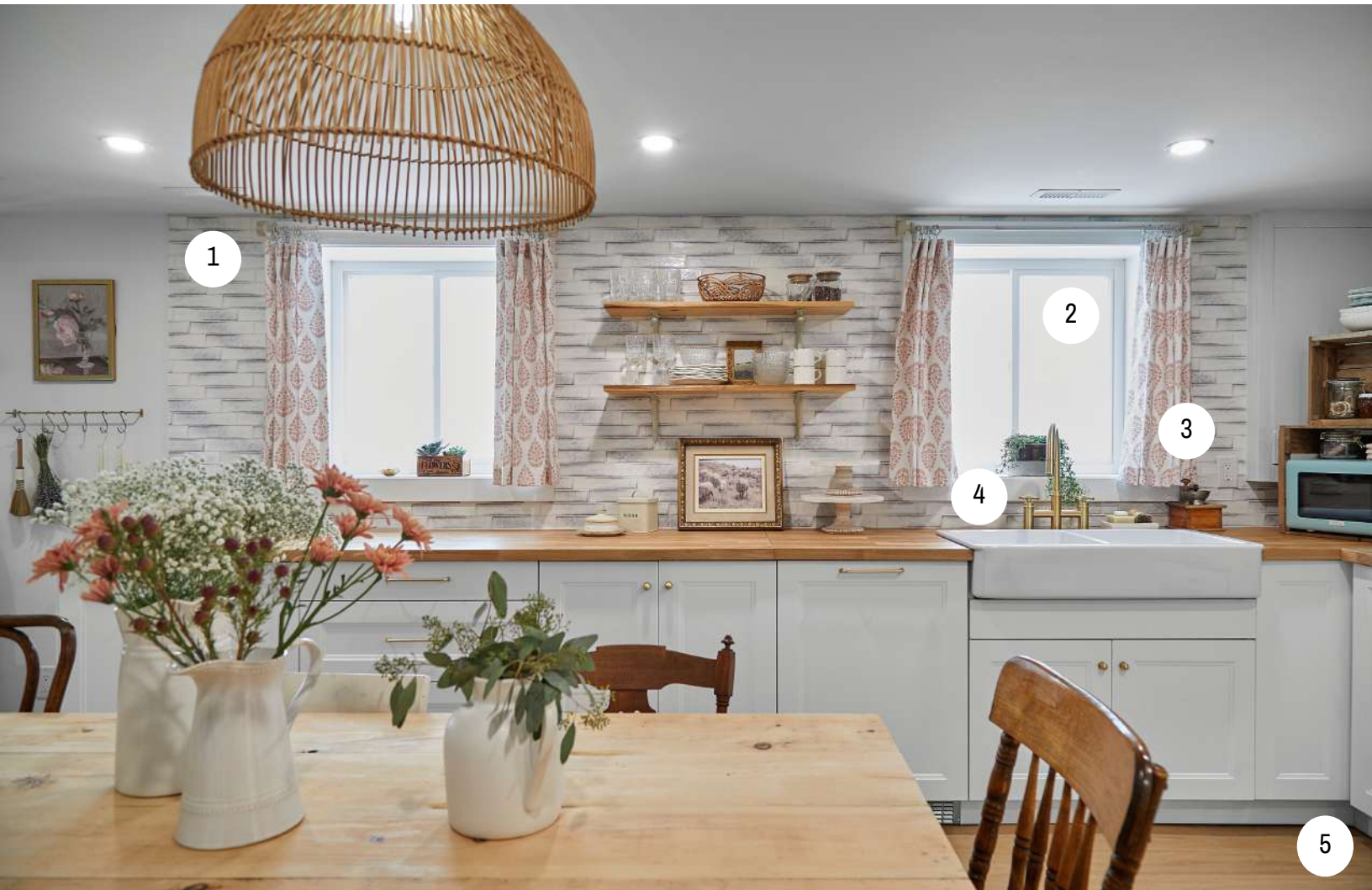




FARMHOUSE FACELIFT

BRIGITTE & NIKOLA - SHOPPING GUIDE



1. TILE: Ciot | [Atelier Antique](#)
2. WINDOWS: Jeld-Wen | [V Slider](#)
3. FABRIC: Tonic Living | [Chandra Fabric](#)
4. FAUCET: Vogt | [Zehn Bridge Kitchen Faucet](#)
5. FLOORING & INSTALLATION: Orangeville Flooring | [Simba Luxury Vinyl Plank in 6607-9](#)
6. CABINET HARDWARE: Battle Creek Hardware | [Paris Pull Bar](#) | [Paris Ball Knob](#)





FARMHOUSE FACELIFT

BRIGITTE & NIKOLA - SHOPPING GUIDE



1. LIGHT FIXTURES: Matteo Lighting | [Buzz Sconce In Aged Gold Brass + White](#)

2. TILE: Ciot | [Atelier Antique](#)

3. CABINET HARDWARE: Battle Creek Hardware | [Paris Pull Bar](#) | [Paris Ball Knob](#)

4. FLOORING & INSTALLATION: Orangeville Flooring | [Simba Luxury Vinyl Plank in 6607-9](#)

5. RUG: Jaipur Living | [Kindred Runner](#)

6. FRIDGE: Unique Appliances | [Classic Retro 12CU Fridge in Marshmallow White](#)



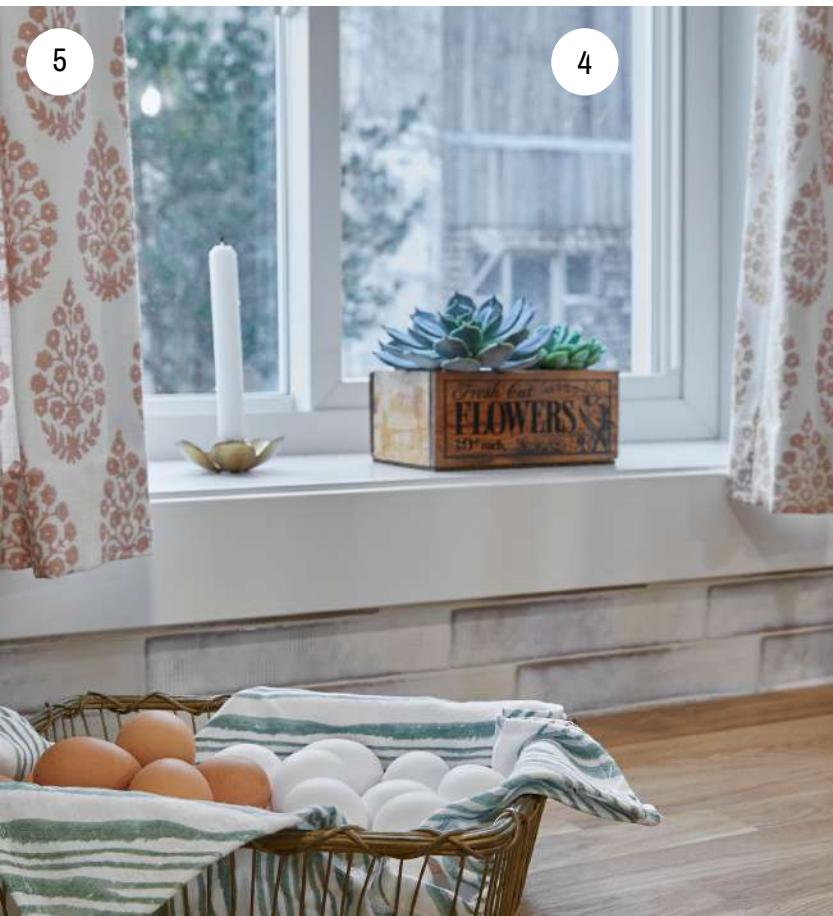


FARMHOUSE FACELIFT

BRIGITTE & NIKOLA - SHOPPING GUIDE



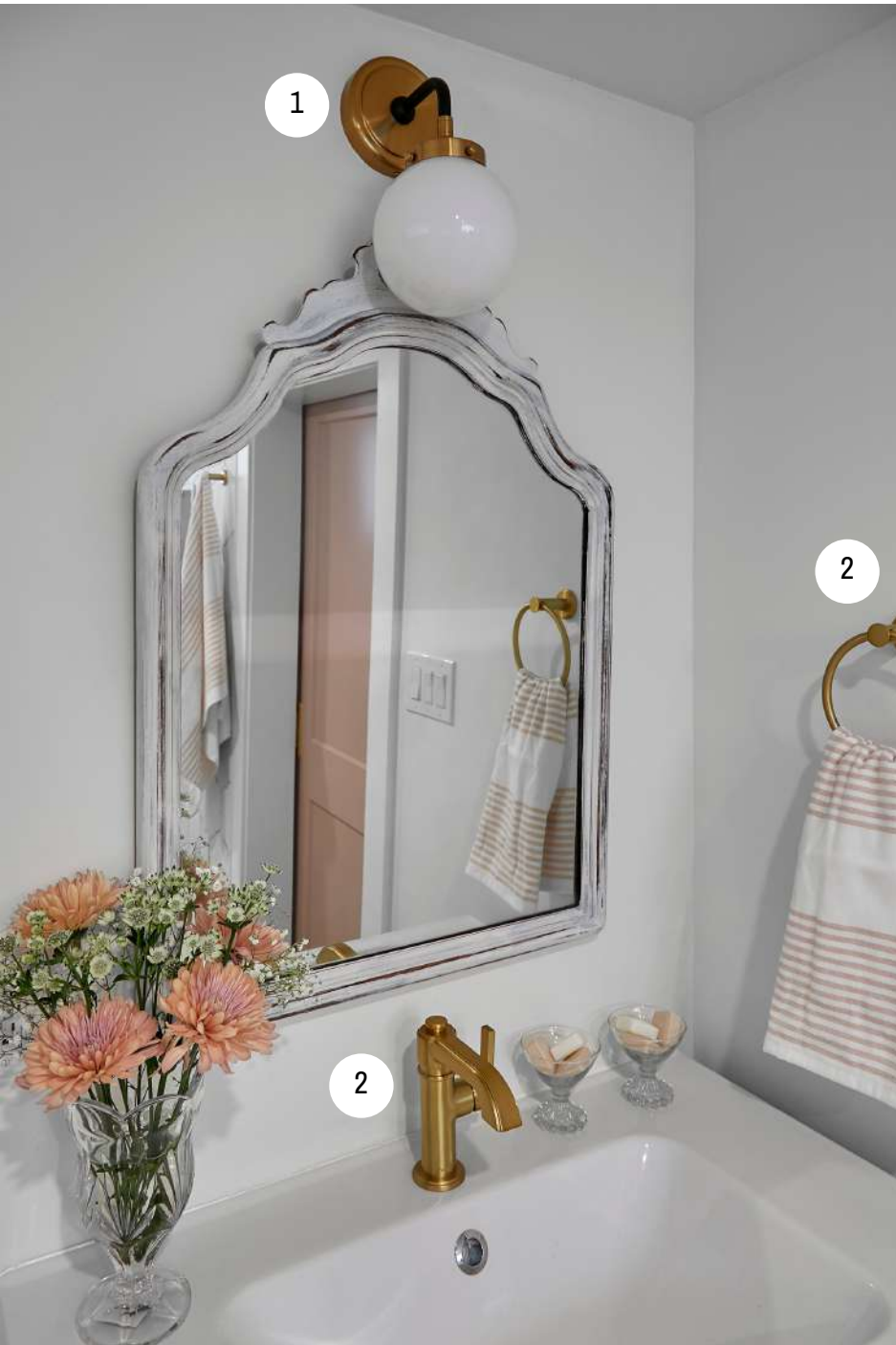
1. TILE: Ciot | [Atelier Antique](#)
2. LIGHT FIXTURES: Matteo Lighting | [Buzz Sconce in Aged Gold Brass + White](#)
3. CABINET HARDWARE: Battle Creek Hardware | [Paris Pull Bar](#) | [Paris Ball Knob](#)
4. WINDOW: Jeld-Wen | [V Slider](#)
5. FABRIC: Tonic Living | [Chandra Fabric](#)
6. STOVE & RANGE HOOD: Unique Appliances | [Classic Retro 24" Convection Gas Range in Marshmallow White](#) | [Classic Retro 24" Range Hood in Marshmallow White](#)





FARMHOUSE FACELIFT

BRIGITTE & NIKOLA - SHOPPING GUIDE



1. LIGHT FIXTURE: Matteo Lighting | [Particles Sconce In Aged Gold Brass](#)

2. FAUCET & TOWEL RING: Vogt | [Zehn Lavatory Faucet](#) | [Zehn Towel Ring](#) | [Zehn Towel Bar](#) in Matte Gold



FARMHOUSE FACELIFT

BRIGITTE & NIKOLA - SHOPPING GUIDE



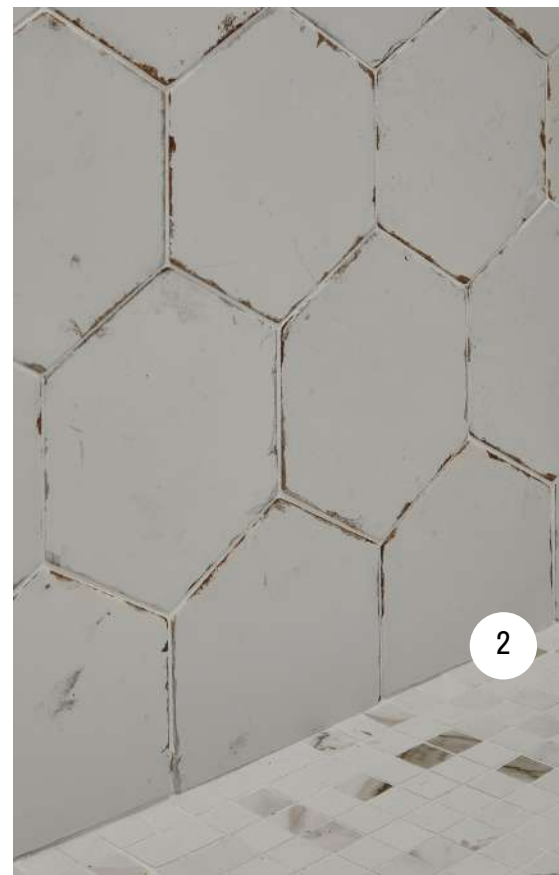
1. WATERPROOFING: [Schluter Systems](#)

2. TILE: Ciot | [Bohemia Lino White](#) | [Marvel Shine Calacatta Imperiale Mosaico Matt](#)

3. FABRIC: Tonic Living | [Mara Spot Fabric](#)

4. WINDOWS: [Jeld-Wen](#)

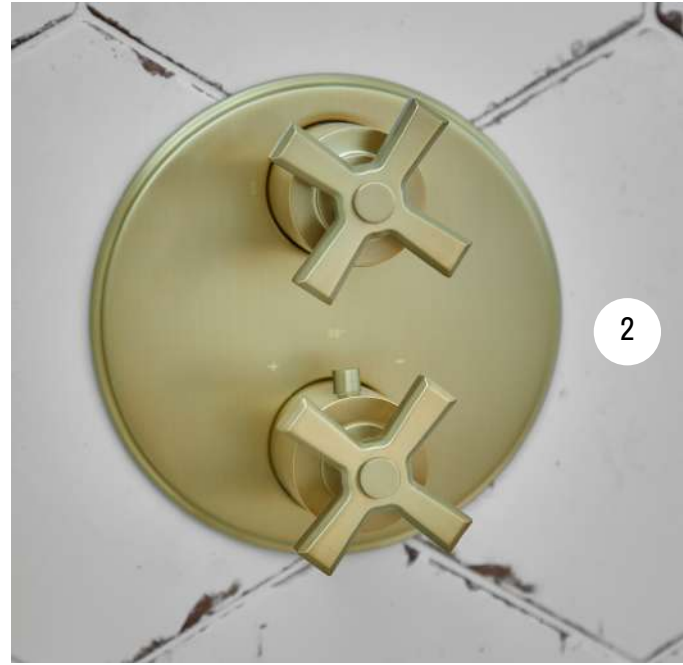
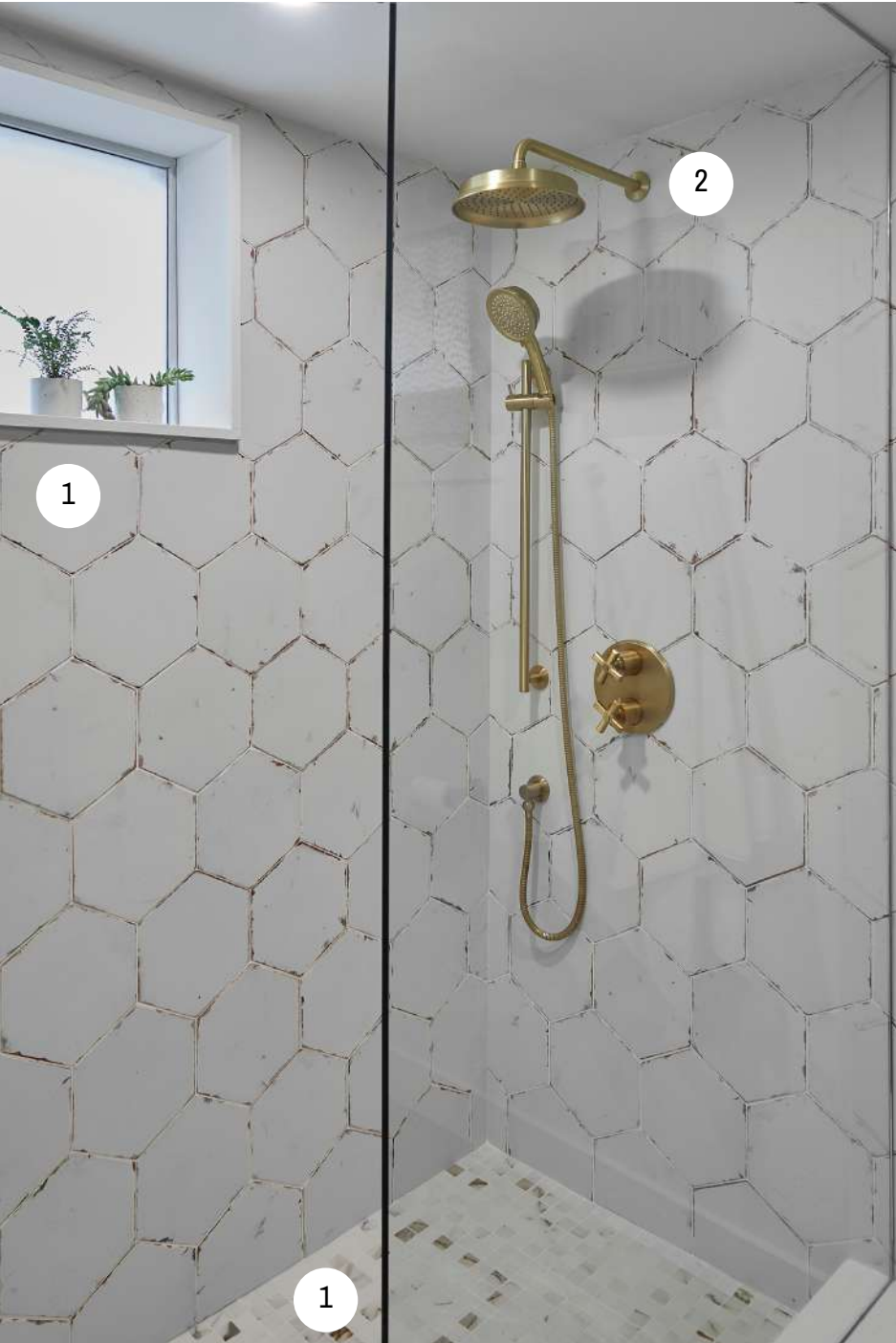
5. ROBE HOOK & TOILET PAPER HOLDER: Vogt | [Zehn Robe Hook in Matte Gold](#) | [Zehn Toilet Paper Holder](#) in Matte Gold





FARMHOUSE FACELIFT

BRIGITTE & NIKOLA - SHOPPING GUIDE



1. TILE: Ciot | [Bohemia Lino White](#) | [Marvel Shine Calacatta Imperiale Mosaico Matt](#)

2. SHOWER FIXTURES: Vogt | [Zehn Thermostatic Shower System in Matte Gold](#)

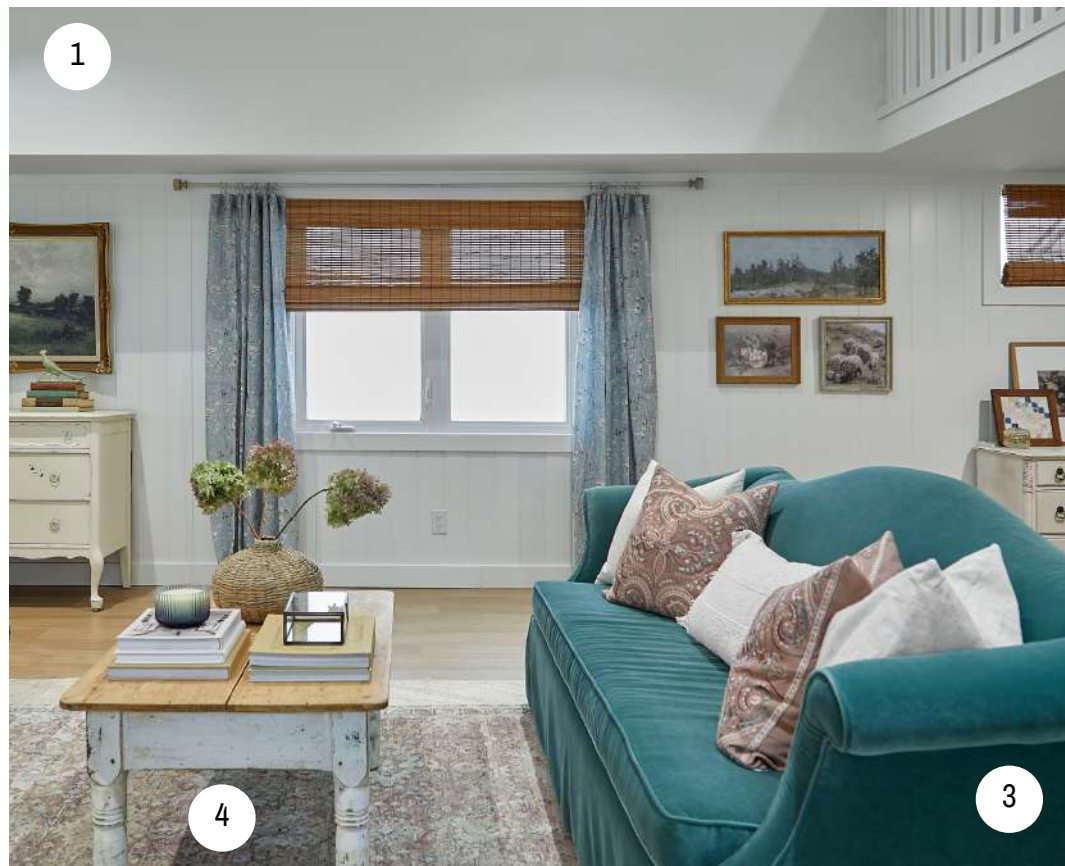


FARMHOUSE FACELIFT

BRIGITTE & NIKOLA - SHOPPING GUIDE



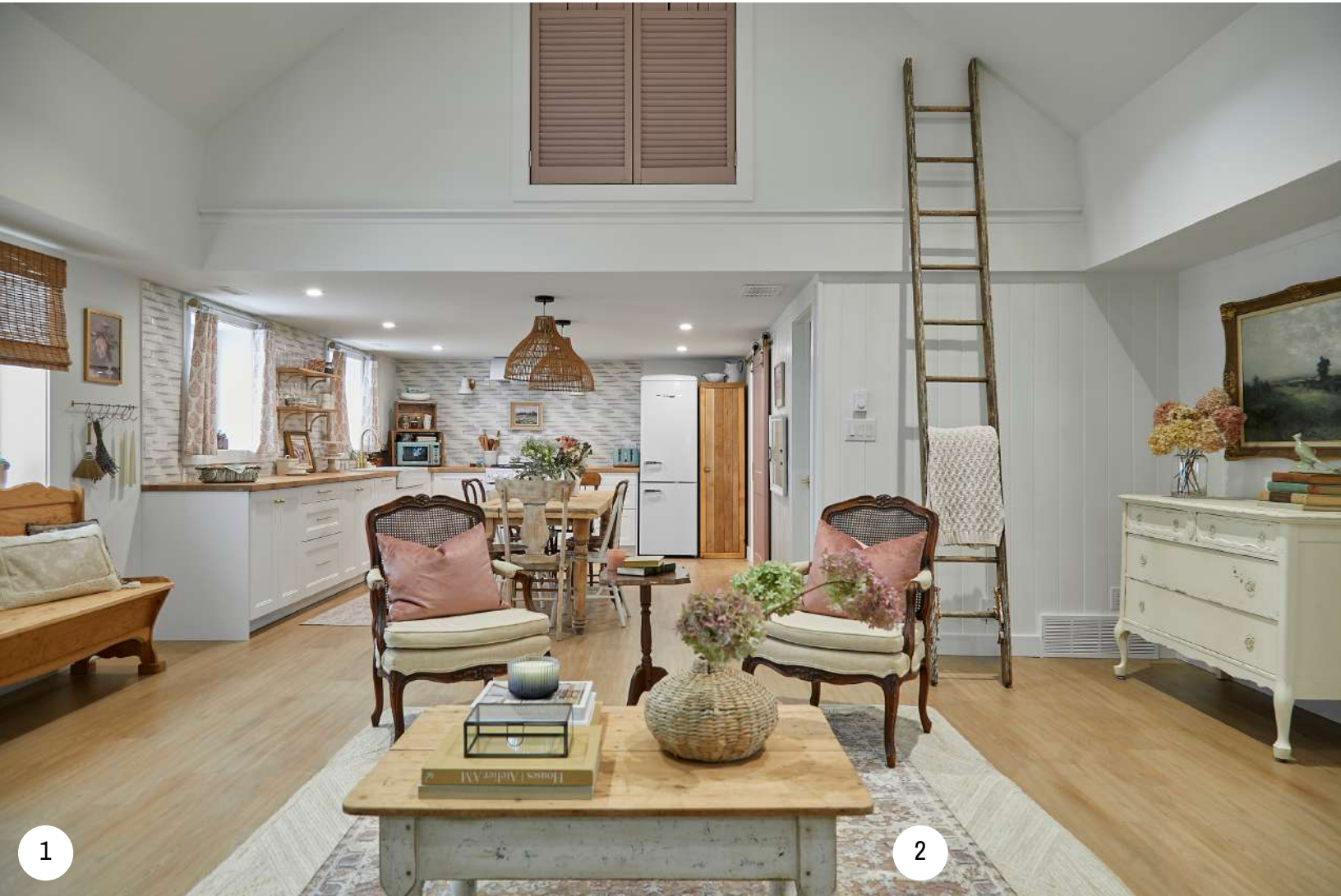
- 1. EXTERIOR DOOR & WINDOWS: [Jeld-Wen](#)
- 2. INSULATION: [Rockwool](#) | [Comfortbatt R22](#)
- 3. UPHOLSTERY FABRIC: [Tonic Living](#) | [Valentina Velvet in Mineral](#)
- 4. AREA RUGS: [Jaipur Living](#) | [Naturals Tobago NAT-35](#) | [Amoret](#)





FARMHOUSE FACELIFT

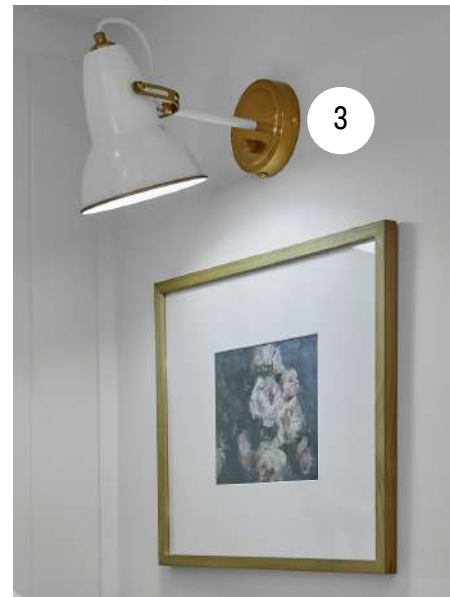
BRIGITTE & NIKOLA - SHOPPING GUIDE



1. FLOORING & INSTALLATION: Orangeville Flooring | [Simba Luxury Vinyl Plank in 6607-9](#)

2. AREA RUGS: Jaipur Living | [Naturals Tobago NAT-35 | Amoret](#)

3. LIGHT FIXTURE: Matteo Lighting | [Buzz Sconce in Aged Gold Brass + White](#)

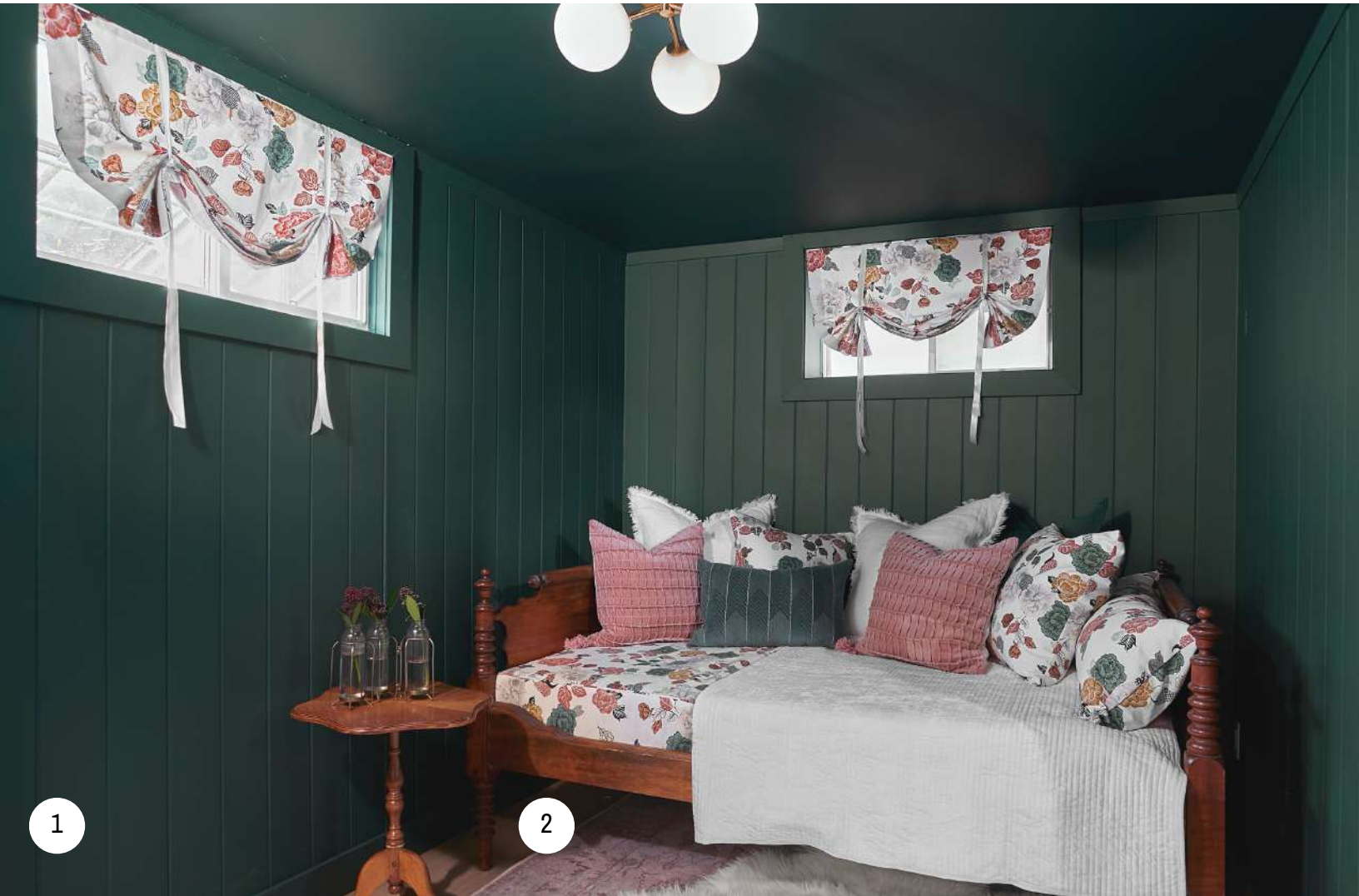


3



FARMHOUSE FACELIFT

BRIGITTE & NIKOLA - SHOPPING GUIDE



1

2

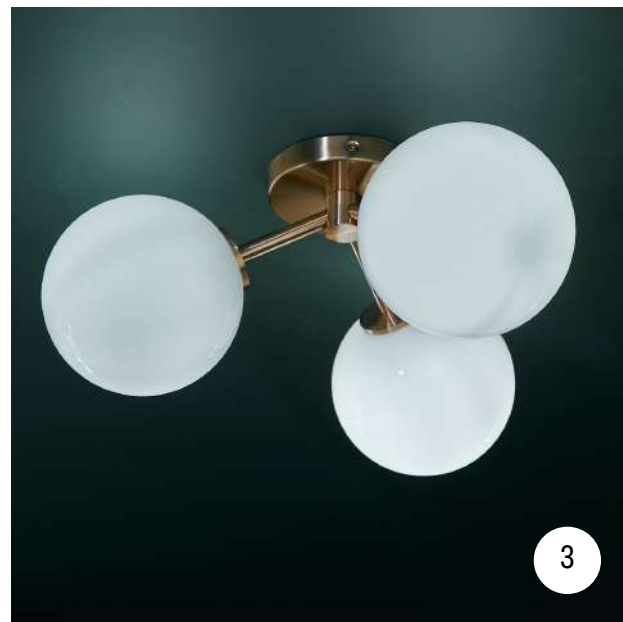


2

1. INSULATION:
Rockwool | [Comfortbatt R22](#)

2. AREA RUG: Jaipur Living | [Kindred](#)

3. LIGHT FIXTURE: Matteo Lighting |
[Novo in Aged Gold Brass](#)



3



FARMHOUSE FACELIFT

BRIGITTE & NIKOLA - SHOPPING GUIDE



1. CUSTOM WALLPAPER:
[Maia Grecco Illustration](#)

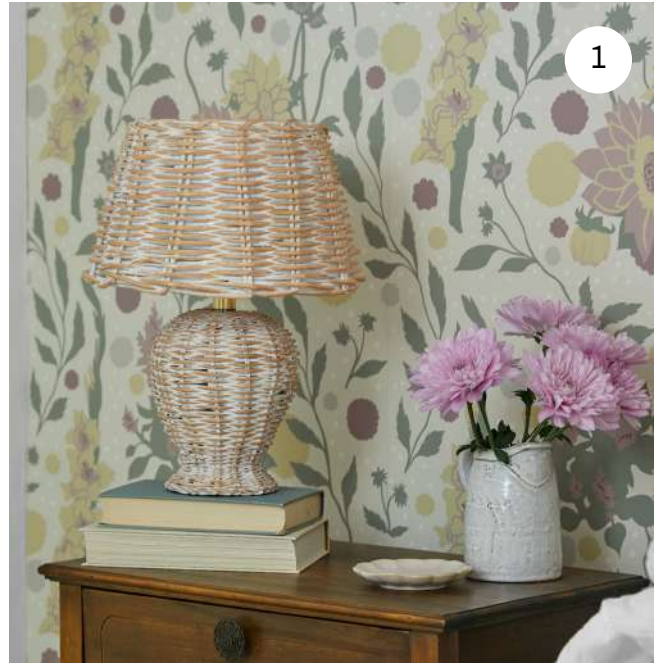
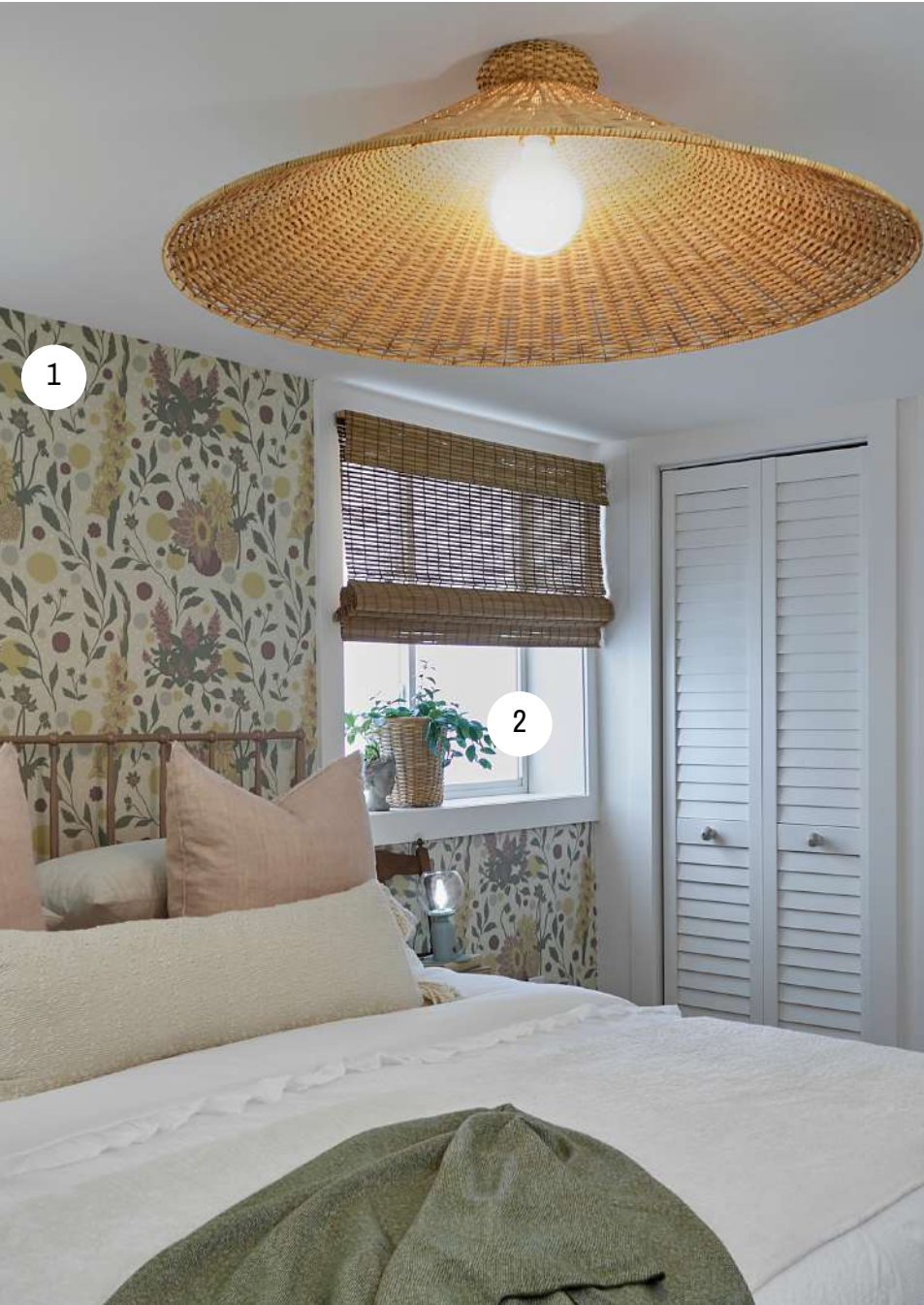
2. WINDOW: [Jeld-Wen](#)

3. AREA RUG: Jaipur Living | [Naturals Tobago NAT- 35](#)



FARMHOUSE FACELIFT

BRIGITTE & NIKOLA - SHOPPING GUIDE



1. CUSTOM WALLPAPER: [Maia Grecco Illustration](#)

2. WINDOW: [Jeld-Wen](#)

3. FLOORING & INSTALLATION: [Orangeville Flooring](#) | [Simba Luxury Vinyl Plank in 6607-9](#)

4. AREA RUG: [Jaipur Living](#) | [Naturals Tobago NAT- 35](#)



FARMHOUSE FACELIFT

BRIGITTE & NIKOLA - SHOPPING GUIDE



1. INSULATION: Rockwool | [Comfortbatt R22](#)
2. LIGHT FIXTURES: Matteo Lighting | [Blare in Aged Gold Brass + White](#)
3. FLOORING & INSTALLATION: Orangeville Flooring | [Simba Luxury Vinyl Plank in 6607-9](#)
4. AREA RUGS & THROW BLANKETS: Jaipur Living | [Sublime Throw Blankets](#) | [Canteena](#)





FARMHOUSE FACELIFT

BRIGITTE & NIKOLA - SHOPPING GUIDE



1. EXTERIOR DOOR & WINDOWS:

Jeld-Wen

2. EXTERIOR STONE CLADDING: Fusion Stone |

Dry-Stack in Charcoal

ADDITIONAL SUPPLIERS INCLUDE:

1. TEMPORARY FLOOR PROTECTION:

Ramboard

2. ANTIQUES: The Rustic Rose Antiques